

Who We Are



QUEST TRUST
Supporting Young People from
Early Years to Employment





Table of contents

Pages 04	_____	Welcome
Pages 05	_____	Our Objectives
Pages 06	_____	Our Settings
Pages 08	_____	Our Values
Pages 10	_____	Why Join Us?
Pages 11	_____	Operational Support & Efficiencies
Pages 12	_____	Organisational Chart
Pages 14	_____	Testimonials
Pages 16	_____	Further Information

Welcome

We are proud to welcome you to the QUEST Trust of schools - a unique faith-based educational community.

Our dedicated team is committed to nurturing, innovative, and inclusive learning environments where students thrive academically, emotionally, and socially. Rooted in collaboration, including with a University Technical College, we focus on employability and real-world skills to help young people achieve their aspirations, working closely with local and national employers.

We encourage active involvement from parents, guardians, and the wider community to create a supportive atmosphere where every child can succeed and embrace future opportunities. We are deeply grateful to all who have supported us - staff, parents, communities, trustees and governors. Your commitment drives us forward as we build truly great schools.

We look ahead with optimism and excitement for the future.



Dr. C. Pailing MBE
Chair of Trustees



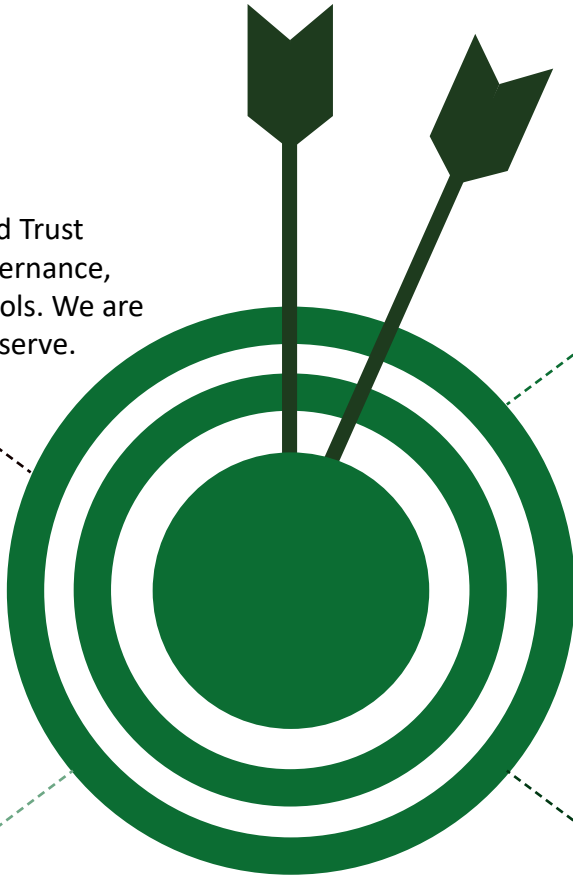
Marc Doyle
Chief Executive Officer

Our Objectives

Our Strategy for building a strong Trust is based upon four strategic objectives:



A United, Well-Governed Trust
We are creating a strong, values-led Trust with clear leadership, effective governance, and shared purpose across all schools. We are connected to the communities we serve.



Investing in People and Places
We prioritise staff development, pupil wellbeing, parental engagement and high-quality learning environments to help our community thrive.



Better Outcomes for All
We are raising attendance, improving outcomes, and enriching experiences for every learner through an inclusive, engaging curriculum.

Sustainable Growth Through Partnerships
By working with schools, churches, businesses and local authorities, we are expanding our impact and building a stronger future. We are aligned with the place we serve.



Our Settings



St. John's C. of E. Primary School

Simpkin Street, Abram, Wigan, WN2 5QE
01942 703 465

Play Pals 3-4 Nursery Setting & Out of School Club



St. John's C. of E. Primary School

Atherton Road, Hindley Green, Wigan, WN2 4SD
01942 255 396

Play Pals Out of School Club



St. Peter's C. of E. Primary School

Kildare Street, Hindley, Wigan, WN2 3HY
01942 258 647

Play Pals 3-4 Nursery Setting & Out of School Club



Play Pals Nursery

675 Atherton Road, Hindley Green, Wigan, WN2 4SD
01942 294 350



Hindley Green Community Primary School

Thomas Street, Hindley Green, Wigan, WN2 4SS
01942 255 406

Play Pals 2-3 & 3-4 Nursery Settings & Out of School Club



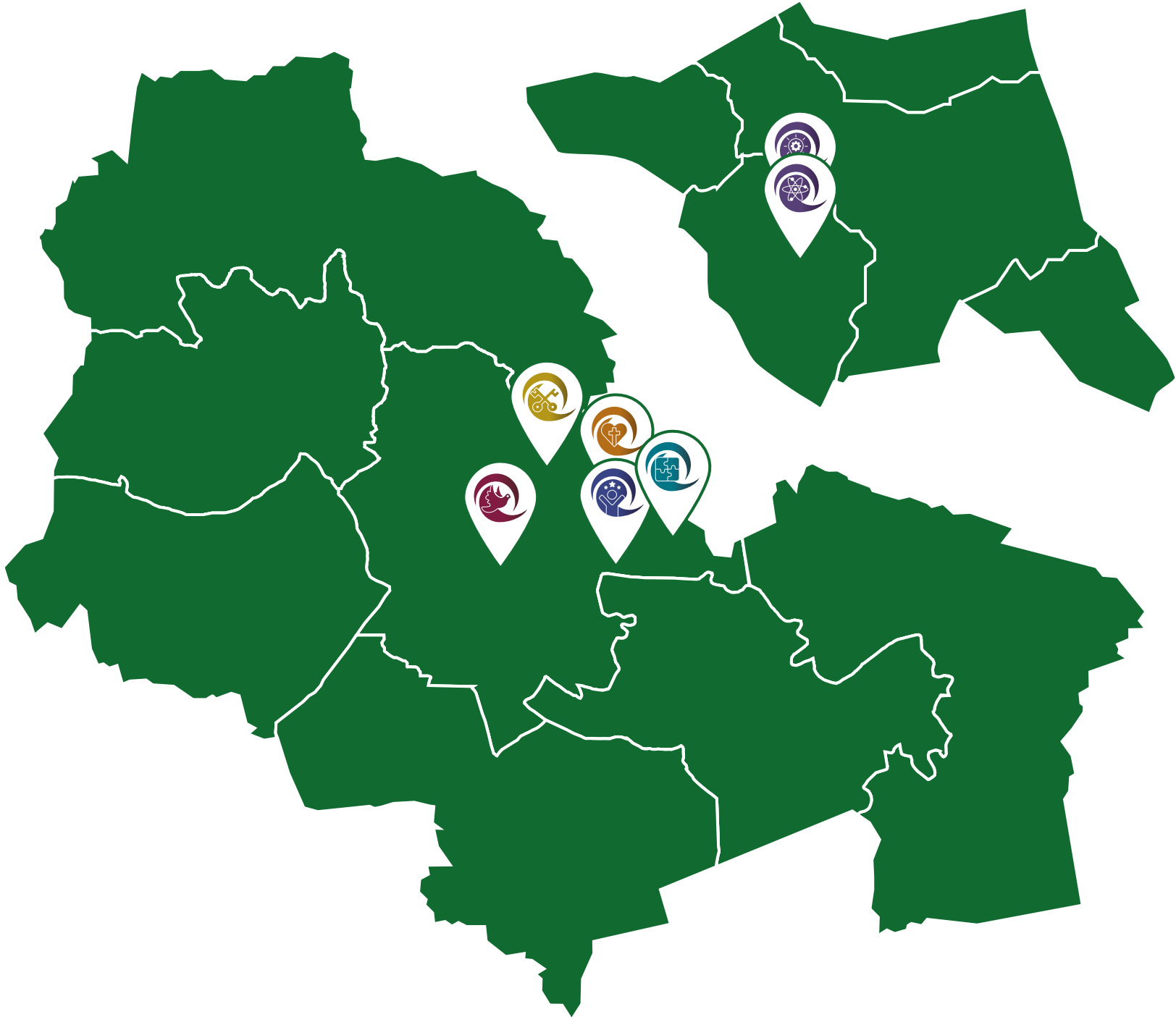
University Collegiate School

The Stoller Building, Deane Road, Bolton, BL3 5AG
01204 928 700



University Collegiate Sixth Form

The Stoller Building, Deane Road, Bolton, BL3 5AG
01204 928 700



Our Values

1.



2.



3.



4.



5.



6.



1.

COMPASSIONATE

We have a deep empathy and understanding for the diverse needs of students, staff and the community. We foster a supportive, inclusive environment where we encourage each other to succeed.

2.

RESPONSIBLE

We always demonstrate a commitment to ethical practices. We take ownership of actions, decisions and their impact on learning outcomes, fostering a culture of integrity and trust within our community.

3.

RESPECTFUL

We believe that being respectful means embracing diversity, fostering an inclusive environment and treating all individuals with dignity and care. We are nurturing a culture where differences are celebrated, communication is courteous and mutual understanding is valued.

4.

KIND

Through thoughtful gestures, empathy and a genuine concern for the wellbeing and growth of others, we are a kind Trust that promotes a culture of care and understanding.

5.

LOYAL

We have an unwavering dedication to our mission, values and the collective goals of students and staff. We believe in steadfast support, commitment and advocacy for the wellbeing and success of everyone we serve.

6.

PROFESSIONAL

We have a steadfast commitment to displaying integrity, expertise and collaboration. We encompass a dedication to ethical conduct, continuous learning, respectful engagement and accountable, innovative practices, fostering an environment that prioritises excellence for all stakeholders.

Why Join Us?

Our Mission

'Supporting Young People from Early Years to Employment,' shows our steadfast dedication to preparing young minds for a lifelong QUEST of knowledge, character, and service.

100%

100% of our schools are rated by Ofsted as Good in all areas.



Staff have a consistent appetite for success with access to a huge collaborative network.

20%

20% increase at KS2 combined over the past 2 years.



An amazing CPD programme with talent pipeline that staff believe in.

12%

Primary schools are up by 12% and a National average for RWM - and improving!



An extensive staff wellness offer

Join the QUEST for excellence!



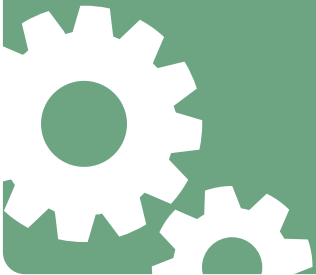
Operational Support & Efficiencies

Our central team uses cloud systems and a unified framework to deliver key functions, ensuring efficient, consistent operations and sustainable Trust growth.

Trust Infrastructure & Shared Services

Investment in cloud systems enables real-time data, reporting, and communication - supporting remote oversight and reducing distance barriers.

Balanced central direction and local delivery help scale the Trust while maintaining consistent quality and governance.



Proven Operational Capacity

Our Trust has a strong record in managing schools, sustaining outcomes, and enabling collaboration.

We focus on efficient, value-driven resource use, supported by a sound financial strategy and risk management.

Tools like ICFP and benchmarking guide resource allocation, while capital investment and strong systems ensure sustainability and compliance.



Staff Benefits

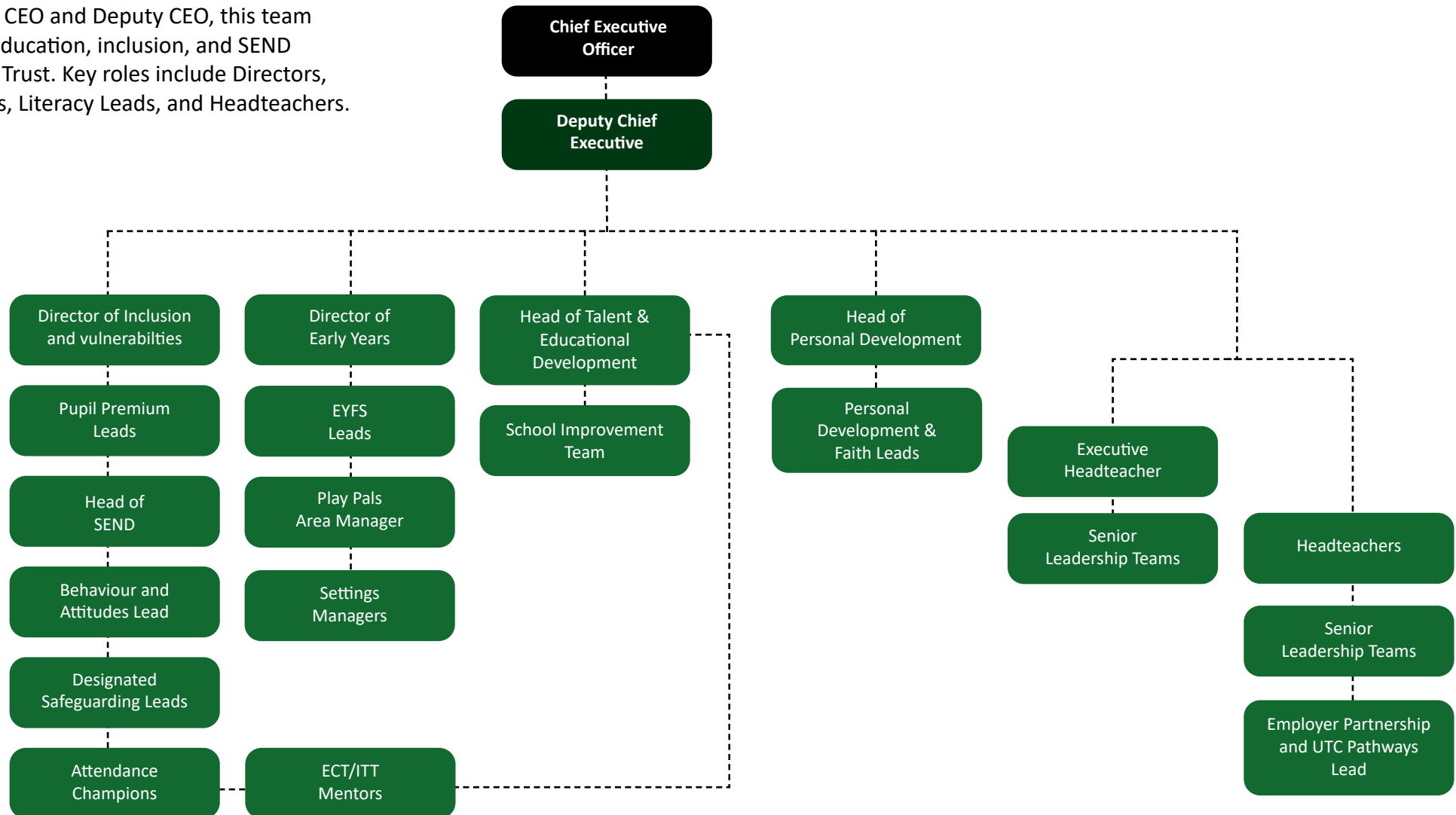
- Apprenticeships
- Employee Recognition
- Pension Scheme
- Wellness Day
- Flexible Working
- and much more!

To view our complete list of staff benefits, please visit our website.

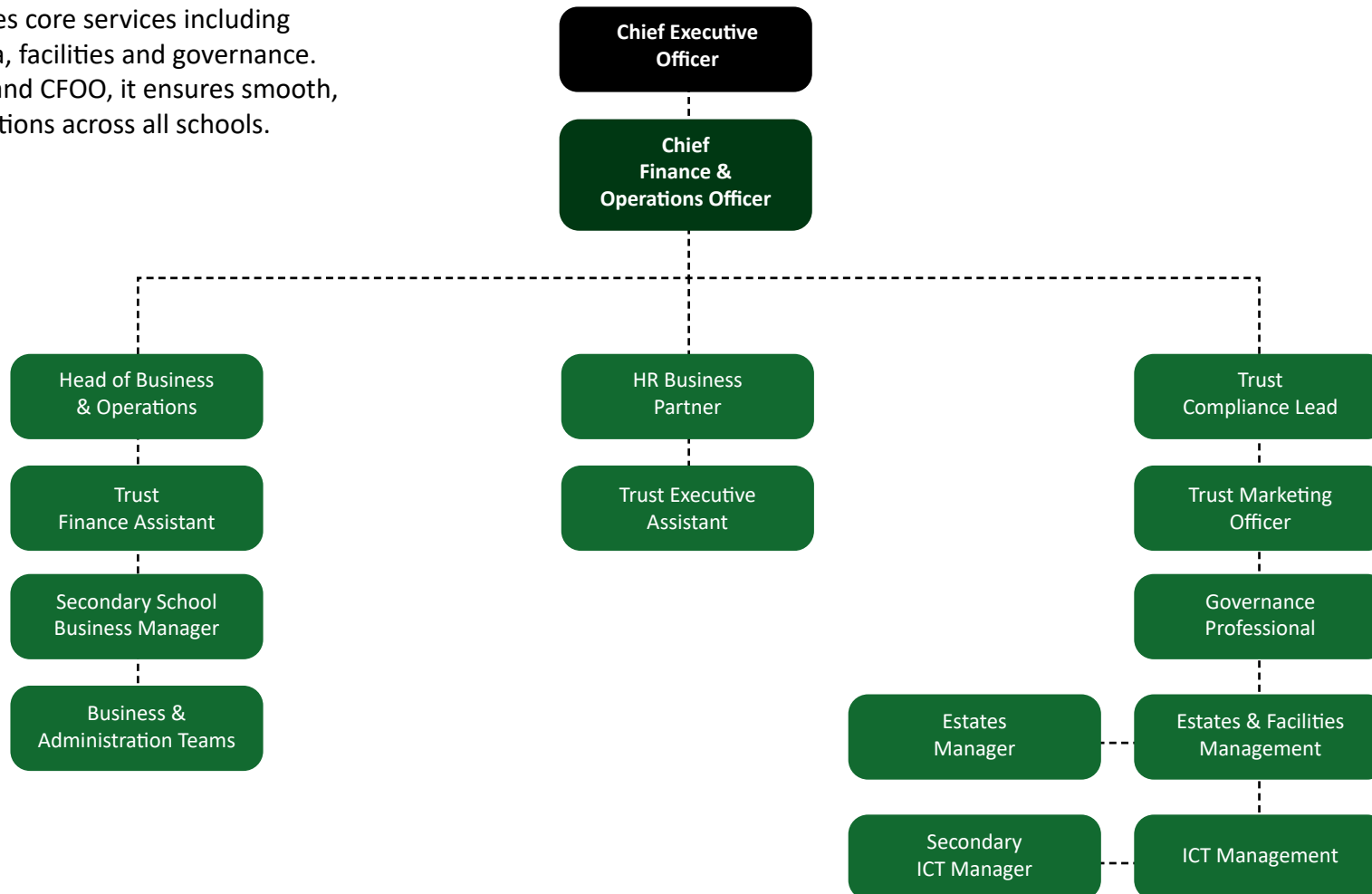


Organisational Chart

Led by the CEO and Deputy CEO, this team supports education, inclusion, and SEND across the Trust. Key roles include Directors, SEND leads, Literacy Leads, and Headteachers.



This team handles core services including finance, HR, data, facilities and governance. Led by the CEO and CFOO, it ensures smooth, compliant operations across all schools.



Testimonials

“ We collaborate, we put children first and we prioritise bothness ”

“ No matter when you join us, or what your role is, you soon become part of our team ”

“ We invest in children to flourish and thrive – that is our focus ”

“ I am so happy I chose QUEST my home. I love the people, I love the fact everyone puts their heart and soul into giving children the best experiences, but with care and integrity ”

“ This Trust is deeply committed to high quality – preparing children for life and guided by our core values ”

“ Don't let our pursuit of excellence frighten you – in our trust care comes first and outcomes follow ”

“ We create amazing career opportunities – we know our people so well ”

“ As a Head, I love it that help is at hand – anything at any time ”

“ There are no egos, we just want children to be happy and successful ”

“ Supporting Young People from Early Years to Employment in everything that we do ”

Further Information

For any enquiries or support please
contact QUEST Trust:



QUEST Trust
682 Atherton Road
Hindley Green
Wigan
WN2 4SQ



01942 834 000
enquiries@QUEST-trust.org.uk
www.QUEST-trust.org.uk



Mr. M. Doyle - Chief Executive Officer
Mrs. T. Hewitt - Chief Finance & Operations Officer
Mrs. N. Richards - Deputy CEO



Photo of PlayPals 3-4 Nursery Pupils

